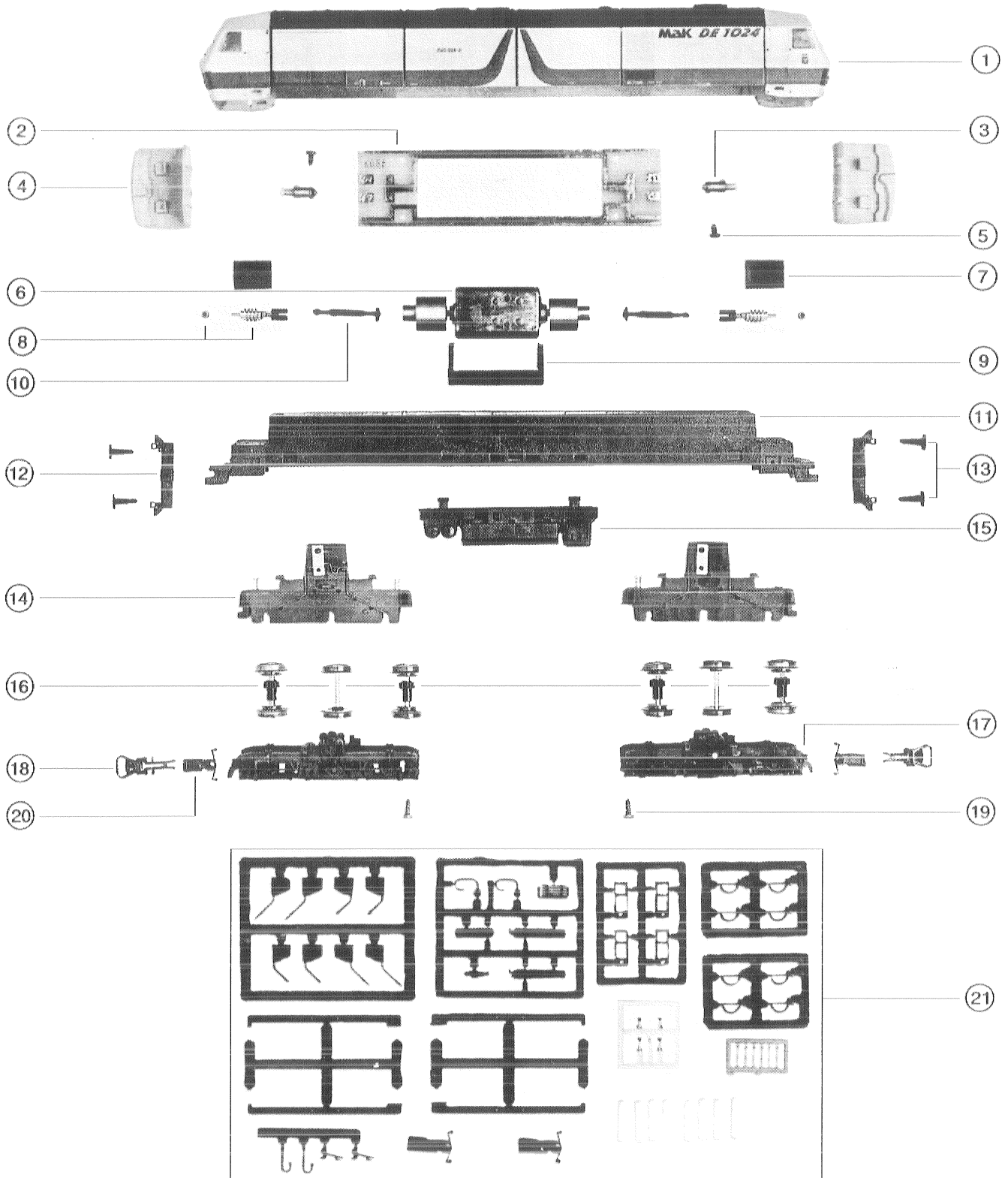




LIMA

HO SCALE SPARE PARTS

DE 240 MAK...HGK - DB



LOCOMOTIVE DE 240 MAK / HGK - DB

31

| n. | ref. | descrizione | n.pz. | n. | ref. | descrizione | n.pz. |
|----|-----------|---|-------|----|-------------|--------------------------------|-------|
| 1 | 708399501 | carrozzeria semiassemblata livrea "Mak" | 1 | 13 | 708399012 | respingenti | 12 |
| | | semi-assembled body in "Mak" livery | | | | buffers | |
| | 708564501 | carrozzeria semiassemblata livrea "HGK" | 1 | 14 | 708399555 | scatola ingranaggi completa | 2 |
| | | semi-assembled body in "HGK" livery | | | | complete gears box | |
| 2 | 715986592 | circuito stampato completo | 1 | | 715975000 | filo-molla per contatto assali | 12 |
| | | printed circuit with components | | | | wire-spring for axles contacts | |
| | 716600000 | diodi | 12 | 15 | 708399508 | sottocassa | 1 |
| | | diodes | | | | underframe | |
| 3 | 716616000 | lampadina | 6 | 16 | 708399556 | set assali motore | 4 |
| | | bulb | | | | set of motor axles | |
| 4 | 708399590 | interno cabina | 2 | 17 | 708399511 | set carrello (interno-esterno) | 2 |
| | | cab interior | | | | set for bogie (inside-outside) | |
| 5 | 717651000 | viti 2,2 x 4,5 | 12 | 18 | 708168515 | ganci | 12 |
| | | screws 2,2 x 4,5 | | | | couplings | |
| 6 | 708399540 | motore con volani | 1 | 19 | 717652000 | viti 2,2 x 6,5 | 12 |
| | | motor with flywheels | | | | screws 2,2, x 6,5 | |
| 7 | 708134019 | copri bronzine | 6 | 20 | 708168091 | prolunga gancio | 12 |
| | | worm cover | | | | extension couplings | |
| 8 | 715572002 | set vite senza fine 2 principi | 6 | 21 | 708399593 | sacchetto particolari | 1 |
| | | set of double-threaded worm | | | | set of details | |
| 9 | 708286009 | supporto motore | 2 | | | | |
| | | motor support | | | A 718567560 | relais AC | 1 |
| 10 | 708130002 | albero trasmissione | 12 | | | AC relais | |
| | | cardan shaft | | | B 600878 | pattino AC | 1 |
| 11 | 719276505 | fondo in zama | 1 | | | AC sliding-shoe | |
| | | zamak chassis | | | C 708399570 | set assali motore AC | 4 |
| 12 | 708399011 | barra porta respingenti | 2 | | | set of AC motor axles | |
| | | bar buffers support | | | | | |
| | | | | | | | |
| | | | | | | | |
| | | | | | | | |
| | | | | | | | |
| | | | | | | | |
| | | | | | | | |
| | | | | | | | |
| | | | | | | | |
| | | | | | | | |
| | | | | | | | |
| | | | | | | | |
| | | | | | | | |
| | | | | | | | |
| | | | | | | | |
| | | | | | | | |
| | | | | | | | |
| | | | | | | | |
| | | | | | | | |
| | | | | | | | |
| | | | | | | | |
| | | | | | | | |
| | | | | | | | |
| | | | | | | | |
| | | | | | | | |
| | | | | | | | |
| | | | | | | | |