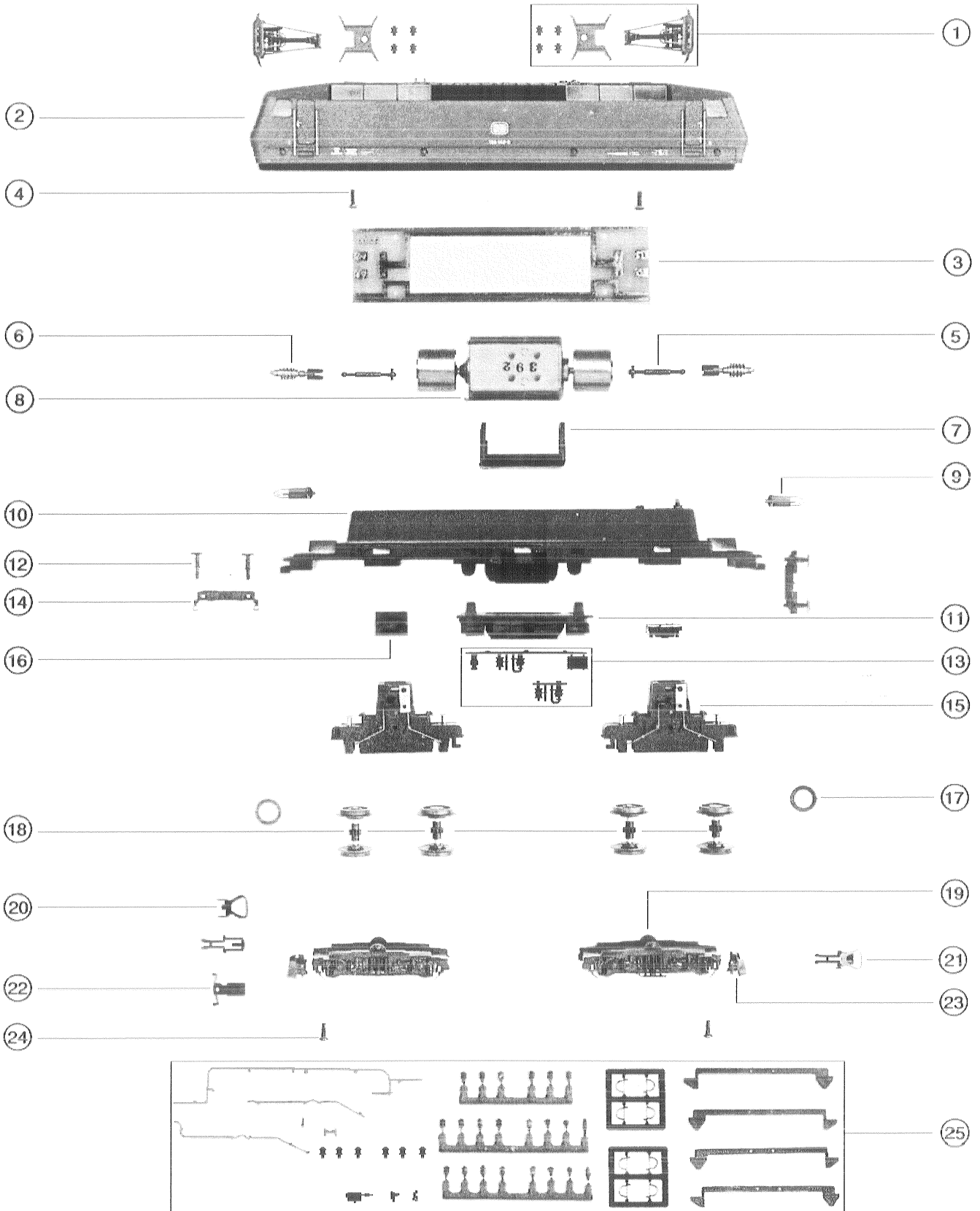




LIMA

HO SCALE SPARE PARTS

E 120 - DB



LOCOMOTIVE E 120 - DB

39

n.	ref.	descrizione	n.pz.	n.	ref.	descrizione	n.pz.
1	600707	pantografo pantograph	2	16	708134019	copri bronzine worm cover	6
2	708142501	carrozzeria semiassemblata rosso/crema semi-assembled body in red-cream livery	1	17	711505000	anelli aderenza traction tyres	24
	708550501	carrozzeria semiassemblata livrea rossa semi-assembled body in red livery	1	18	708190556	set assali motore set of motor axles	4
	715846592	circuito stampato completo printed circuit with components	1	19	708142012	carrelli bogies	2
3	71660000	diodi diodes	12	20	713003000	gancio anello chiuso close ring coupling	12
4	717668000	viti 2 x 6 screws 2 x 6	12	21	708168515	ganci couplings	12
5	708142002	albero trasmissione cardan shaft	12	22	708168091	prolunga gancio coupling extension	12
6	715595001	set vite senza fine 1 principio set of single-threaded worm	6	23	708142014	spatineve snow-ploughs	6
7	701030015	supporto motore motor support	2	24	717652000	viti 2,2 x 6,5 screws 2,2 x 6,5	12
8	708142540	motore con volani motor with flywheels	1	25	708142593	sacchetto particolari set of details	1
9	716616000	lampadine bulbs	6	A	718567560	relais AC AC relais	1
10	719245505	fondo in zama zamak chassis	1	B	600878	pattino AC AC sliding-shoe	1
11	708143012	sottocassa under-frame	1	C	708190570	set assali e carrelli AC set of AC bogies and axles	4
12	708005575	respingenti dx - sx left and right buffers	12				
13	708143011	stampata particolari sottocassa set of under-frame details	1				
14	708142013	traversa porta respingenti bar buffers support	2				
15	708179555	scatola ingranaggi completa complete gears box	2				
	715643000	filo-molla per contatto assali wire-spring for axles contact	12				